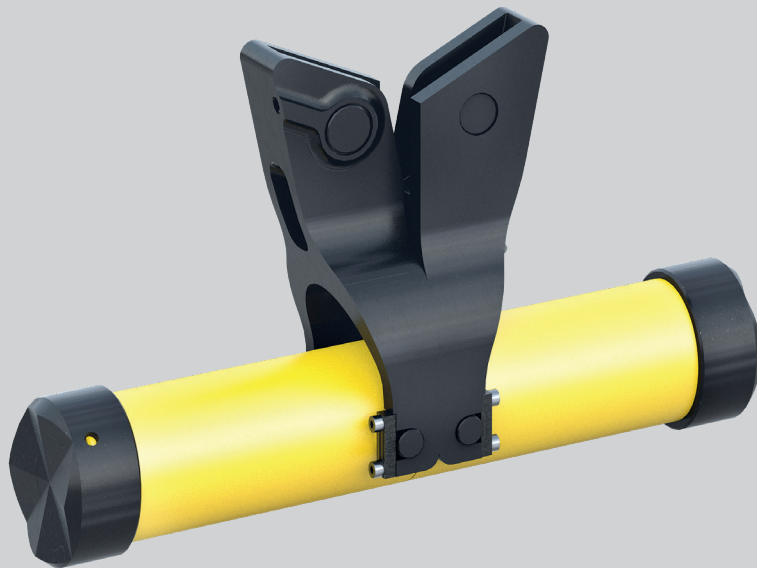


MECHANICAL RESCUE RAM RZM CRT

1094618

NEW!



The new mechanical rescue ram RZM CRT for combination tools with removable tips

- Standardized fitment compatible with all WEBER RESCUE Combi tools with removable tips
- Captive bolts on the mounting arms for quick and easy attachment to the combination tool
- Combines the functionality of a rescue ram with a Combi tool
- Expands the range of applications thanks to the large opening width
- Compact closed dimension of 320 mm

Compatible rescue tools:

- RIT-Tool E-FORCE
- SPS 370 (E-FORCE)
- SPS 370 MK2 (E-FORCE)
- SPS 400 (E-FORCE)
- SPS 400 MK2 (E-FORCE)

Possible uses and applications:

- making space for escape or access openings
- Dashboard/Steering wheel lifts
- opening car doors by spreading the window opening
- shifting loads
- lifting loads
- and many more

MECHANICAL RESCUE RAM RZM CRT

1094618

NEW!



RIT-Tool E-FORCE3 with RZM CRT



SPS 370 MK2 with RZM CRT

Technical data RZM CRT:

	Part no.	Weight	Closed dimension
RZM CRT	1094618	7.8 kg	320 mm

Technical data RZM CRT combined with RIT-Tool and other Combi tools:

Combi tool	Part no.	Weight (ready for use)	Opening	Max. pushing force
RIT-Tool E-FORCE2	1082900	21.0 kg	655 mm	23.4 kN
RIT-Tool E-FORCE3	1093377	21.0 kg	655 mm	23.4 kN
SPS 370	1063314	23.0 kg	760 mm	32.3 kN
SPS 370 MK2	1096648	22.4 kg	760 mm	32.3 kN
SPS 370 E-FORCE2	1077676	26.9 kg	760 mm	32.3 kN
SPS 370 MK2 E-FORCE3	1096649	25.2 kg	760 mm	32.3 kN
SPS 400	5931134	25.1 kg	795 mm	33.7 kN
SPS 400 MK2	1096650	24.2 kg	795 mm	33.7 kN
SPS 400 E-FORCE2	1079181	28.9 kg	795 mm	33.7 kN

WEBER-HYDRAULIK GMBH

Heilbronner Straße 30
74363 Güglingen/Germany
Phone +49 7135 71-10270
Fax +49 7135 71-10396
info@weber-rescue.com

Emil Weber Platz 1
4460 Losenstein/Austria
Phone +43 7255 6237-120
Fax +43 7255 6237-12461
info@weber-rescue.com

Images are non-binding.
We reserve the right to technical modifications. 10/2020